

## Quick Installation Guide For Bridge, Bridge Router & Access Point

### A. Hardware Installation

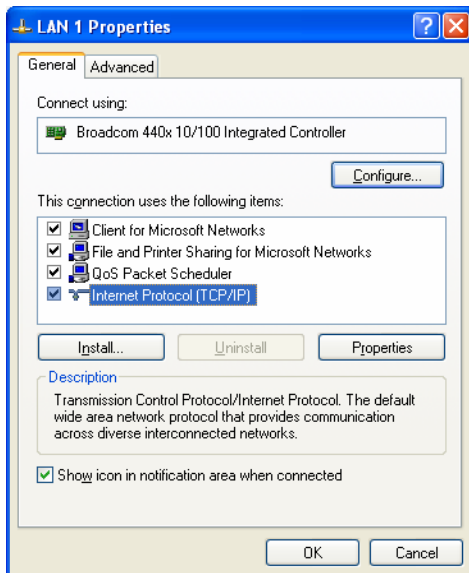
1. **Wired LAN connection:** Connect an Ethernet cable (i.e. UTP/STP Straight RJ45) from your computer's Ethernet (RJ45) port to one of the LAN ports of this Bridge/Bridge Router/Access Point.
2. **Wireless LAN connection:** Place the Bridge/Bridge Router/Access Point in an open environment to gain best signal strength.
3. **Power on:** Plug the power cord into the power outlet and Bridge/Bridge Router/Access Point.

**Note:** For best results place this Bridge/Bridge Router/ Access Point at least 5 meters from another Bridge/Bridge Router/Access Point.

### B. Configure the TCP/IP Settings of your Computer

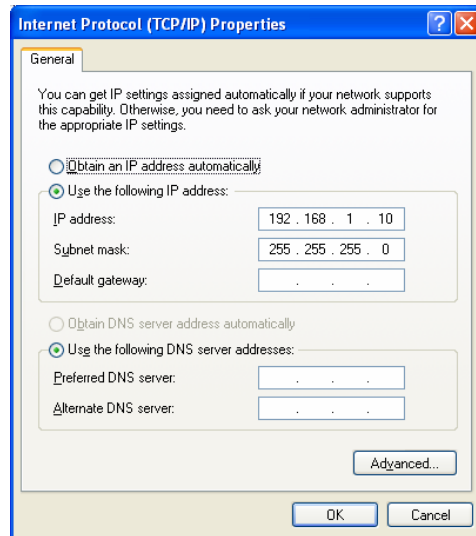
*For Windows2000 and Windows XP:*

1. Click **Start > Settings > Control Panel** and double click on **Network and Dial-Up Connection**. (In Windows XP click **Start > Control Panel**. Select **Classic View** in the upper left corner, and then double-click on the **Network Connections** icon.)
2. Right click on the **Local Area Connection** bound to your LAN Card and select **Properties**. Select **Internet Protocol (TCP/IP)** and click on the **Properties** button.



3. In the **General** tab, select **Use the following IP address**, and fill in the following:  
**IP address:** 192.168.1.10

**Subnet mask:** 255.255.255.0



4. Click on the **OK** button to close to window, and then click **OK** again in the **Properties** window.

*For Windows 95/98/ME:*

1. Click **Start > Settings > Control Panel** and double click on **Network**.
2. In the **Configuration** tab, select **TCP/IP** and click on the **Properties** button.
3. In the IP Address tab, select Specify an IP address and fill in the following:

**IP address:** 192.168.1.10  
**Subnet mask:** 255.255.255.0

4. Click on the **OK** button to close the window, and then click on the **OK** button again in the **Properties** window.

**Note:** At this point you may be required to insert the Windows Installation CD or restart your computer.

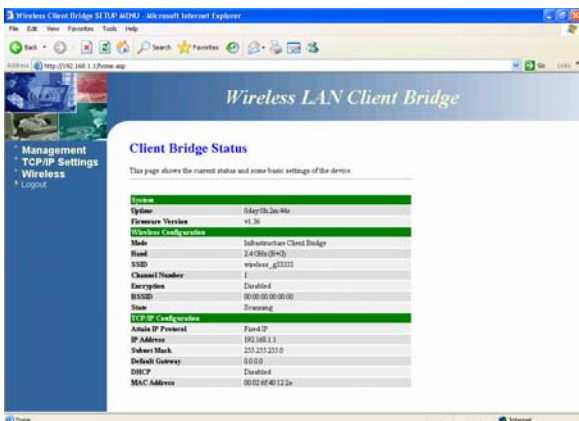
### C. Login/Configure the Bridge/Bridge Router

1. To access to the Bridge/Bridge Router using the web-browser, enter the default IP address (192.168.1.1) of the Bridge/Bridge Router into the address bar of the web-browser, and press **Enter**.
2. A login box will then appear. Enter "**admin**" for Username and Password, and click on the **OK** button.

## Quick Installation Guide For Bridge, Bridge Router & Access Point



- The **Status** page of the Bridge/Bridge Router will then appear. This page displays the current status of the Bridge/Bridge Router, which includes: the connection state, SSID, channel, IP address and MAC address.



- Refer to the detailed User's Manual in the CD-ROM provided to configure the Bridge/Bridge Router.

### D. Login/Configure the Access Point

- To access to the Access Point using the web-browser, enter the default IP address (**192.168.1.2**) of the Access Point into the address bar of the web-browser, and press **Enter**.

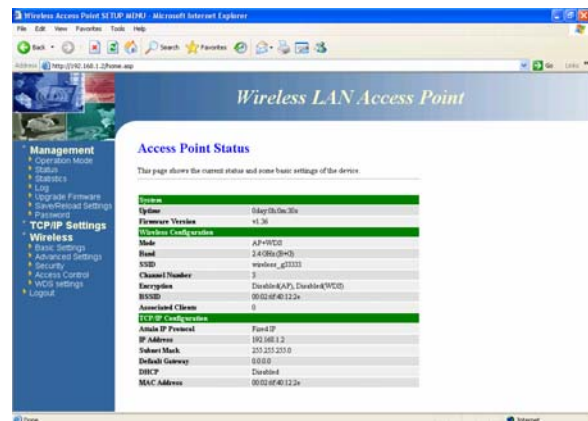
**Note:** By default, this device is configured in Bridge mode. In order to login to the Access Point, you must switch to Access Point mode using the **Operation** link. Refer to the detailed User's Manual provided in the CD-ROM for more

information about switching between Bridge, Bridge Router and Access Point mode.

- A **login** box will then appear. Enter "**admin**" for Username and Password, and click on the **OK** button.



- The **Status** page of the Access Point will then appear. This page displays the current status of the Access Point, which includes the Access Point name, MAC address, IP address, SSID, channel, WEP and WPA settings.



- Refer to the detailed User's Manual in the CD-ROM provided to configure the Access Point.

**Note:** You must configure your wireless LAN card based on the settings of your Bridge/Bridge Router or Access Point. Refer to the User's Manual of your wireless LAN card for instructions.

P/N:6709A0233000