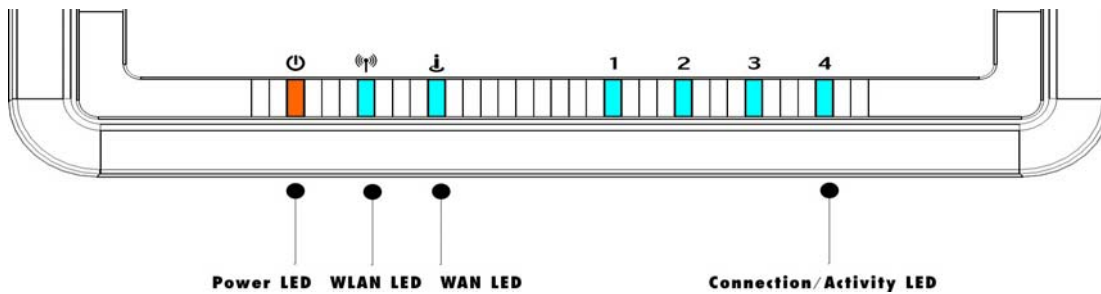


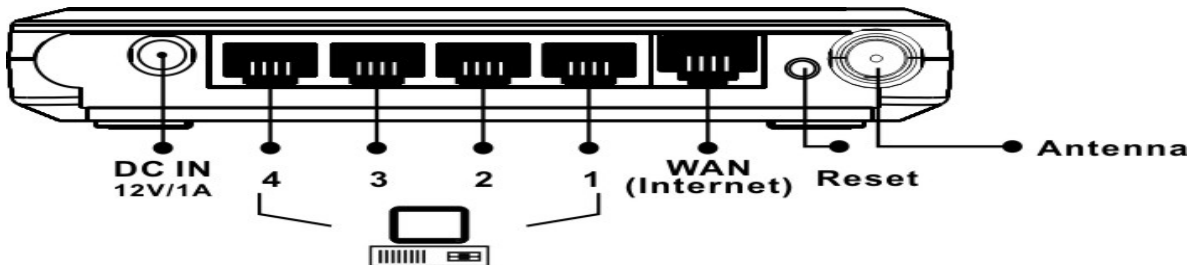
The ECB1221R Wireless Client Bridge operates seamlessly in the 2.4 GHz frequency spectrum supporting the 802.11b (2.4GHz, 11Mbps) and the newer, faster 802.11g (2.4GHz, 54Mbps) wireless standard. High output power and high sensitivity can extend range and coverage to reduce the roaming between APs to get more stability wireless connection. It also can reduce the expense of equipment in the same environment. To protect your wireless connectivity, this device can encrypt all wireless transmissions through 64/128-bit WEP data encryption and also supports WPA2/WPA/802.1x for powerful security authentication. The MAC addresses filter let you select exactly which stations should have access to your network.



**Top Panel**



**Real Panel**

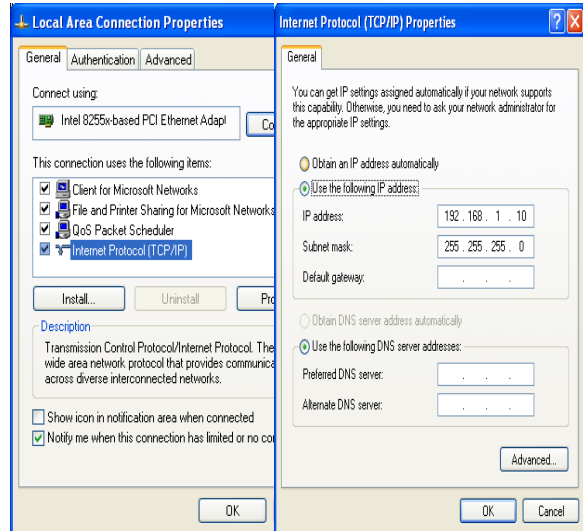


Label	Description
LAN Ports (1 – 4)	Use an Ethernet cable to connect each port to a computer on your Local Area Network (LAN).
WAN Port	Use an Ethernet cable to connect this port to your WAN router.
DC Connector	Use the power cable and connect the adapter to the power socket on the wall, and the DC inlet into the DC connector.
Antenna Connector	Connect the omni-directional antenna to the SMA connector.
Connection / Activity LED	This LED will light up once an Ethernet cable is connected to one of the LAN ports.
WAN LED	This LED will light up once an Ethernet cable is connected to WAN (Internet) port.
WLAN LED	This LED will light up once the RF (wireless LAN) feature is enabled
Power LED	This LED will light up once the power cable is connected to the DC connector.

## IP Address Configuration

The default IP address of the device is **192.168.1.1**. In order to log into this device, you must first configure the TCP/IP settings of your PC/Notebook.

1. In the control panel, double click Network Connections and then double click on the connection of your Network Interface Card (NIC). You will then see the following screen.
2. Select **Internet Protocol (TCP/IP)** and then click on the **Properties** button. This will allow you to configure the TCP/IP settings of your PC/Notebook.
3. Select **Use the following IP Address** radio button and then enter the IP address (192.168.1.10) and subnet mask (255.255.255.0). Ensure that the IP address and subnet mask are on the same subnet as the device.
4. Click on the **OK** button to close this window, and once again to close LAN properties window.
- 5.



## Logging In

1. To configure the device through the web-browser, enter the IP address of the device (**192.168.1.1**) into the address bar of the web-browser and press **Enter**.
2. After connecting to the IP address, the web-browser will display the login page. Specify **admin** for both the **User Name** and **Password** and then click on the **Login** or **OK** button.
3. Once you have logged in, you can configure the WAN, LAN and Wireless settings. Please refer to the user's manual in the CD-ROM to configure these parameters.

