

# Quick Start Guide

## 802.11n Wireless Client Bridge, Access Point & Repeater

ECB9500 is a powerful wireless enterprise 2.4GHz 11N Client Bridge, Access Point, and WDS/Repeater that supports 7 multi-functions for operation in every working environment.

ECB9500 is a Wireless Network device that delivers up to 6x faster speeds and 7x extended coverage than traditional 802.11g devices. ECB9500 supports networks with superior throughput, performance and an unparalleled wireless range. The WPS function simplifies security by allowing wireless connectivity with a push button.

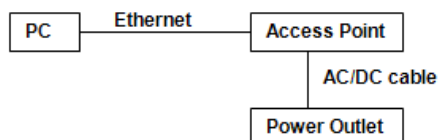
The high performance, long range, and secure ECB9500 is well suited for any time of wireless environment.



This Guide will assist you in setting up the Access Point as quickly as possible and with the least effort.

### Hardware Installation

1. Place the unit in an appropriate place after conducting a site survey.
2. Plug one end of the Ethernet cable into the RJ-45 port of the device and another end into your PC/Notebook.
3. Insert the DC-inlet of the power adapter into the port labeled "DC-IN" and the other end into the power socket on the wall.



### IP Address Configuration

The default IP address of the device is **192.168.0.1 (Client Bridge mode)**. In order to log into this device, you must first configure the TCP/IP settings of your PC/Notebook.

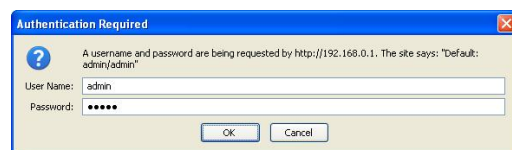
1. In the control panel, double click Network Connections and then double click on the connection of your Network Interface Card (NIC). You will then see the following screen.
2. Select **Internet Protocol (TCP/IP)** and then click on the **Properties** button. This will allow you to configure the TCP/IP settings of your PC/Notebook.
3. Select **Use the following IP Address** radio button and then enter the IP address (192.168.0.21) and subnet

mask (255.255.255.0). Ensure that the IP address and subnet mask are on the same subnet as the device.

4. Click on the **OK** button to close this window, and once again to close LAN properties window.

### Logging In

1. To configure the device through the web-browser, enter the IP address of the Bridge (**default: 192.168.0.1**) into the address bar of the web-browser and press **Enter**.
2. After connecting to the IP address, the web-browser will display the login page. Specify **admin** as the default **User Name** and **Password**, and then click on the **Login** button.



### Administration

1. Click on the **Admin** link under the **Tools** menu. This option allows you to create a new password for the device. For security it is highly recommended for security reasons.
2. **Old Password:** Specify the old password into the first field. The default password is **admin**.
3. **New Password:** Specify a new password into this field and then re-type

# Quick Start Guide

## 802.11n Wireless Client Bridge, Access Point & Repeater

---

- the password into the **Re-type New Password** field. Then click on the **Apply** button.
4. Click on the **Apply** button to save the changes.

### Operating Mode

1. Click on the **General** link on the **Wireless** drop-down menu.
2. **Operating Mode:** Select an operating mode from the drop-down list. Options available are Access Point, Client Bridge, WDS Bridge and Repeater mode.
3. Refer to the User's Manual for a detailed explanation of each operating mode.
4. **Country/Region:** Select the region from the drop-down list.
5. Click on the **Apply** button to save the changes.

### IP and DHCP Settings

1. Click on the **LAN** link on the **Network** drop-down menu. This feature allows you to configure the LAN interface using a static IP address or as a DHCP client. You may also configure the DHCP server settings through this page. This IP address is also used to access the web-based interface.
2. **Bridge Type:** Select **Dynamic IP** if the Access Point is connected to a DHCP server. This will allow the Access Point to pass IP addresses to the clients associated with it. You may select **Static IP Address** if you would like the device to use a static IP address. In this case, you would be required to specify an IP address, subnet mask, and default gateway IP address.
3. **IP Address:** Specify an IP address.
4. **IP Subnet Mask:** Specify the subnet mask for the IP address.
5. **802.1d Spanning Tree:** Choose to **enable** or **disable** the spanning tree protocol.

6. **DHCP Server:** Choose to **enable** or **disable** the DHCP server.
7. **Lease Time:** Select a lease time from the drop-down list.
8. **Start IP:** Specify the starting IP address of the DHCP range.
9. **End IP:** Specify the ending IP address of the DHCP range.
10. **Domain Name:** Specify a domain name.
11. Click on the **Apply** button to save the changes.

**Note:** If you change the IP address here, you may need to adjust your PC's network settings to access the network again.

### Wireless Network & Security

1. Click on the **General** link on the **Wireless** drop-down menu. This feature allows you to configure the wireless mode, channel, SSID, and security settings.
2. **Radio:** Choose to **enable** or **disable** the wireless radio.
3. **Mode:** The current wireless mode is displayed in this field.
4. **Band:** Depending on the type of wireless clients that are connected to the network, you may select **B**, **G**, or **B+G+N-mixed**.
5. **Enable SSID#:** Select the SSID profile number from the drop-down list.
6. **SSID:** The SSID is a unique named shared amongst all the points of the wireless network. The SSID must be identical on all points of the wireless network and cannot exceed 32 characters.
7. **Auto Channel:** Choose **Enable** to have the device automatically select the cleanest RF channel.
8. **Channel:** Select a channel from the drop-down list. The channels available are based on the country's regulation.
9. Click on the **Apply** button to save the changes.