

ESR-1221Ext Wireless Broadband Router Quick Start Guide

Connect the supplied power-adaptor to the power inlet port and connect it to a wall outlet. Then, the router automatically enters the self-test phase. During self-test phase, Power LED will blink briefly, and then will be lit continuously to indicate that this product is in normal operation.

CHECK

- A standard CD-ROM drive
- Internet connection should be setup & ready to use (ADSL or cable modem).
- Modem must provide RJ45 port to connect with ESR-1221Ext.
- Microsoft Windows compatible PC/Notebook with UPnP enabled network adapter
- CAT 5 network cable(s), RJ45 port on PC/Notebook.

STEP 1

Connect **ESR-1221Ext WAN** port & your **modem WAN** port with RJ45 cable.

STEP 2

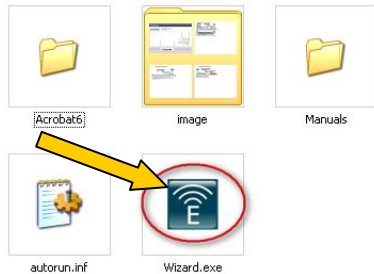
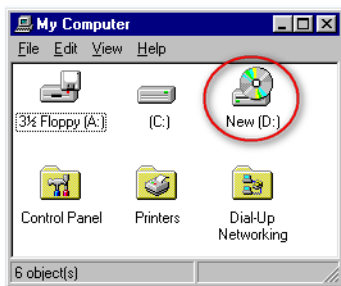
Power up **ESR-1221Ext**.POWER led on front panel lights up & remains stable.

STEP 3

Connect **ESR-1221Ext LAN** port & **PC/Notebook RJ45** port with network cable.

STEP 4

Insert **Wizard CD** into your CD-ROM drive and browse it with Windows Explorer.



Click on "**Wizard.exe**" to activate SMART WIZARD.

Step 5

Click on [**Setup Wizard**] and follow the instruction given on the screen to complete the initial device configuration.



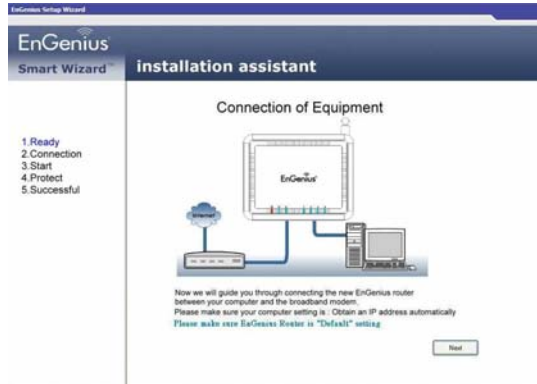
Step 6

Click Next to Proceed with the wizard on the connection of the router.



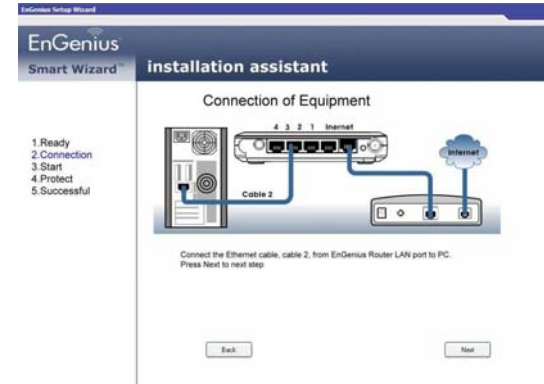
Step 7

Click 'Next' to start connection



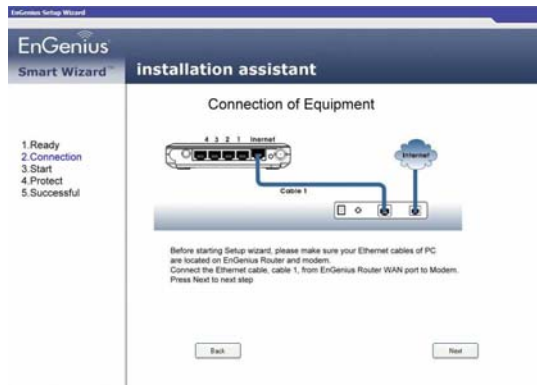
Step 9

Click 'Next' to proceed



Step 8

Click 'Next' to proceed to next step



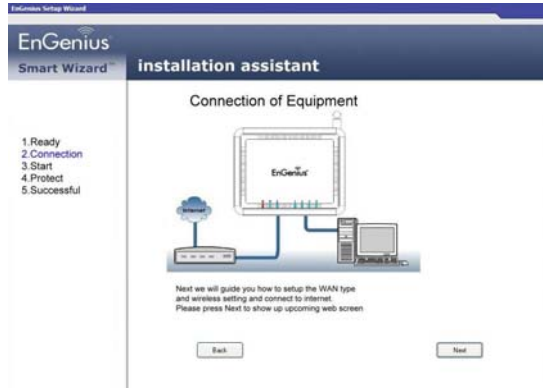
Step 9

Click 'Next' to proceed



Step 11

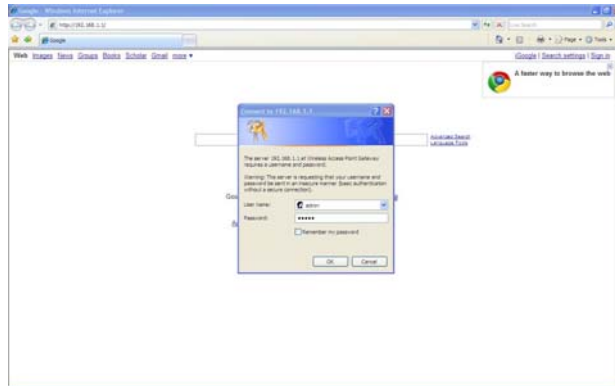
Click 'Next' to proceed



Step 12

Once the Internet Explorer Start, Enter '192.168.1.1'.

Enter User Name and password 'admin' to access Web GUI.



Step 13

Click 'TCP/IP Settings' to set WAN preference.



Step 14

Select 'WAN Interface' and Select 'DHCP Client' on WAN Access Type.

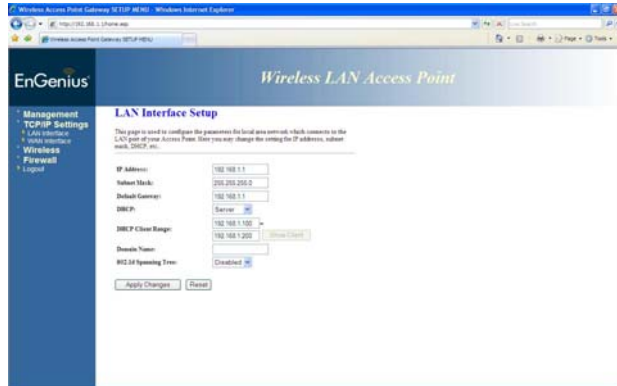
**For M1 and Starhub users Click 'Clone MAC Address' and 'Apply Changes'

* For Singnet users just Click 'Apply Changes' for system to take effect.



Step 15

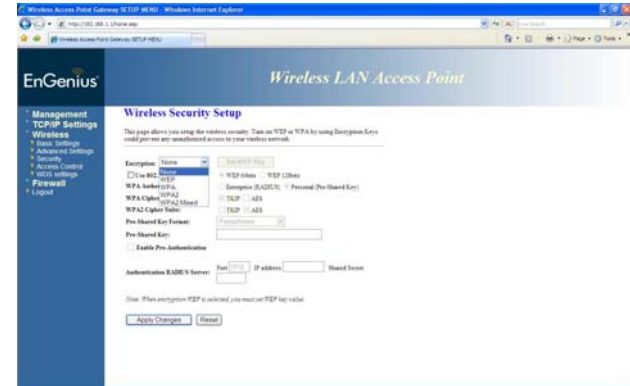
Select 'LAN Interface' and make sure 'Server' is selected at DHCP.



Step 17

Setup WiFi Security

Click on 'Wireless' and Click on 'Security' to define WiFi encryption. Next Click on 'Apply Changes' to take effect.



Step 16

Click 'Wireless' and select 'Basic Settings' to change SSID to desired identity and Click 'Apply Changes' to take effect.



Note

Once setup is completed, power off modem and router. Power up the modem and router at the same time and wait for both the modem and router to completely initialize.