

EAO-5758-12

12dbi Indoor/Outdoor Omni Directional Antenna

• 5.8GHz



PRODUCT SPECIFICATION

Gain	12 dBi
Frequency Range (MHz)	5725-5850
VSWR	≤ 1.5
Polarization	Vertical
Horizontal Beamwidth-°	360
Vertical Beamwidth-°	7
Impedance (Ω)	50
Maximum input power (W)	50
Connector	N-type / Female

MECHANICAL SPECIFICATION

Antenna Dimension	Φ25x750
Weight (Kg)	0.5
Radome Material	Fiberglass
Mounting Mast Diameter (mm)	Ø30~ Ø50
Operating Temperature-°C	-40~60

EAO-5758-12 Datasheet Version 020511

*Theoretical wireless signal rate based on IEEE standard of 802.11 a, b, g chipset used. Actual throughput may vary. Network conditions and environmental factors lower actual throughput rate.

** All specifications are subject to change without notice

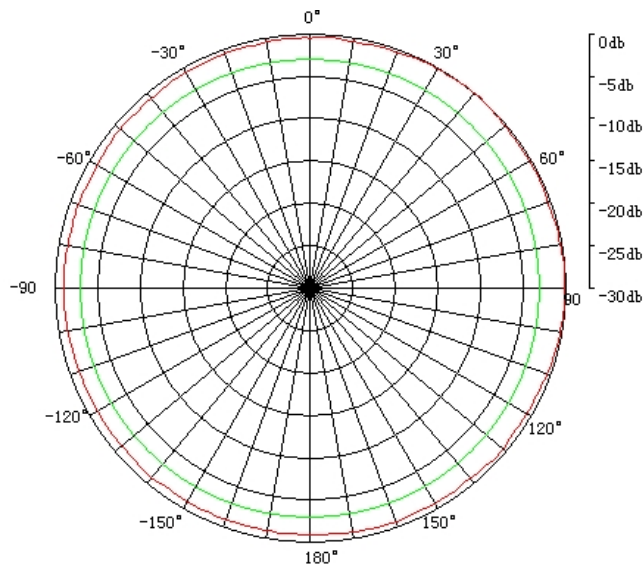
ACCESSORIES/ANTENNA
EAO-5758-12

EAO-5758-12

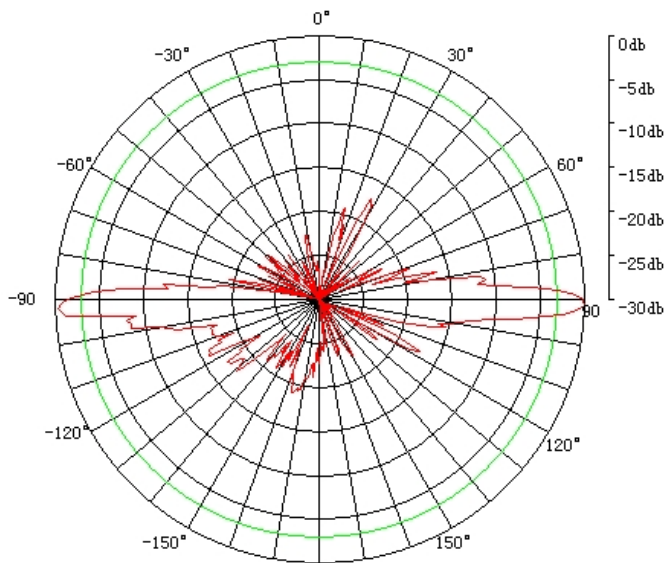
12dbi Indoor/Outdoor Omni Directional Antenna

• 5.8GHz

Antenna Radiation Pattern



SPQ-5800-12-H



SPQ-5800-12-E

EAO-5758-12 Datasheet Version 020511

*Theoretical wireless signal rate based on IEEE standard of 802.11 a, b, g chipset used. Actual throughput may vary. Network conditions and environmental factors lower actual throughput rate.

** All specifications are subject to change without notice

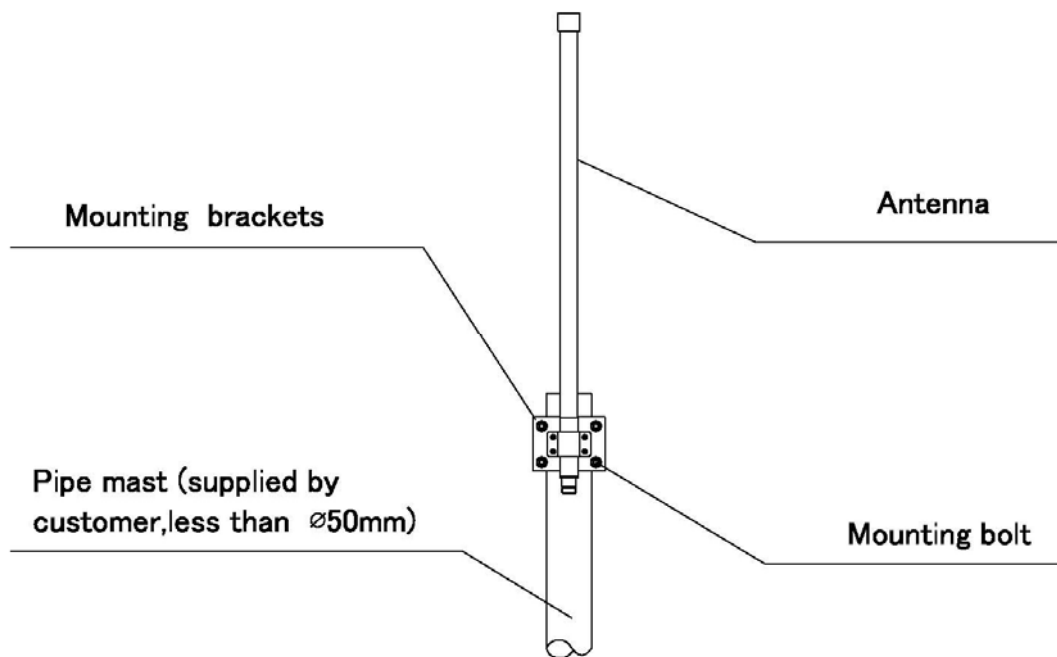
ACCESSORIES/ANTENNA
EAO-5758-12

EAO-5758-12

12dbi Indoor/Outdoor Omni Directional Antenna

• 5.8GHz

MOUNTING DIAGRAM



Installation :

1. Mount the antenna on the mounting brackets according to the Mounting diagram. The antenna is vertical polarized. Make sure the antenna polarization is vertical to the ground.
2. Mount the antenna on the Mast supplied by customer according to the Mounting diagram.
3. Test the antenna with equipment to make sure the antenna receive the best signal, then lock all the screws and seal the connector between antenna and cable.