

EAP9550

11N Wall Mount
Access Point / WDS AP / Universal Repeater

- 2.4 GHz
- 2T X 2R
- 300Mbps



PRODUCT DESCRIPTION

EAP9550 is a powerful and multi-functioned 11n Access Point and it can act three modes AP/WDS/Universal Repeater. Smoke detector appearance will minimize visibility. So this model can work properly at Hotel or public area.

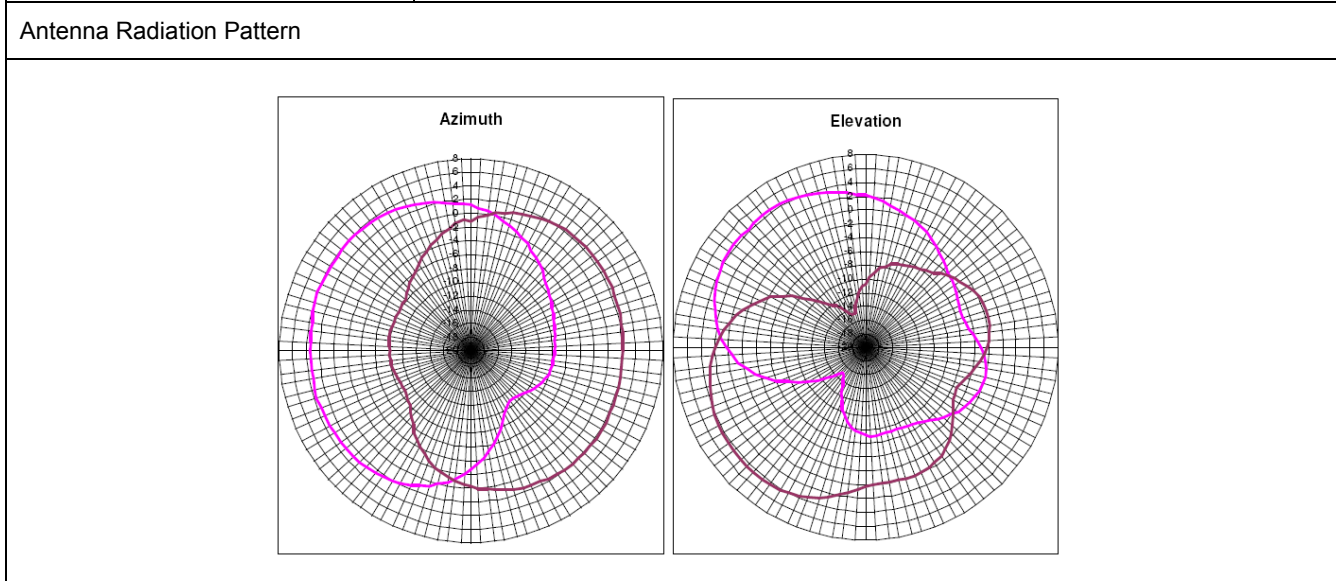
EAP9550 is a Wireless Network device that delivers up to 6x faster speeds and 7x extended coverage than 802.11g devices. Product's RF performance is finely tuned so it will bring best wireless signal for each client. EAP9550 supports home network with superior throughput, performance and unparalleled wireless range. To protect data during wireless transmissions, EAP9550 encrypts all wireless transmissions through WEP data encryption and supports WPA/WPA2. Its MAC address filter allows users to select stations with access to connect network. EAP9550 thus is the best product to ensure network quality for hotspots.

| Features | Benefits |
|-----------------------------------------------------------|-----------------------------------------------------------------------------------------------------------------------------------------------------|
| High Speed Data Rate Up to 300Mbps | Capable of handling heavy data payloads such as MPEG video streaming |
| IEEE 802.11n draft Compliant and backward | Fully compatible with IEEE 802.11b/g/n devices |
| Multi-modes selectable | Allowing users to select AP/WDS/Universal Repeater mode in various |
| Point-to-point, Point-to-multipoint Wireless Connectivity | Allowing to transfer data from buildings to buildings |
| WDS (Wireless Distributed System) | Making wireless AP and Bridge mode simultaneously as a wireless repeater |
| Universal Repeater | The easiest way to your wireless network's coverage |
| Support Multi-SSID function (4 SSID) in AP mode | Allowing clients to access different networks through a single access point and to assign different policies and functions for each SSID by manager |
| WPA2/WPA | Powerful data security |
| MAC address filtering in AP mode | Ensuring secure network connection |
| User isolation support (AP mode) | Protecting the private network between client users. |
| Power-over-Ethernet (IEEE802.3af) | Flexible Access Point locations and saving cost |
| Keep personal setting | Keeping the latest setting when firmware upgrade |
| SNMP Remote Configuration Management | Helping administrators to remotely configure or manage the Access Point easily |
| QoS (WMM) support | Enhancing user performance and density |

| SPECIFICATIONS | |
|-------------------------------------|-------------------------------------------------------------------------------------------------------------------------------------|
| > Hardware Specifications | |
| Expansion Slots | N/A |
| Physical Interface | <ul style="list-style-type: none"> ● LAN: One 10/100Mbps ● Reset Button ● Power Jack |
| LEDs Status | <ul style="list-style-type: none"> ● Power/ Status ● LAN (10/100Mbps) ● WLAN (Wireless Connection) |
| Power Requirements | <ul style="list-style-type: none"> ● Power Supply: 90 to 240 VDC ± 10%, 50/60 Hz (depends on different countries) |

| | |
|----------------------------------|---------------------------------------------------------------------------------------------------------------------------------------------------------------------------------------------------------------------------------|
| | <ul style="list-style-type: none"> ● Active Ethernet (Power over Ethernet, IEEE802.3af)- 48 VDC/0.375A ● Device: 12V/1A |
| Regulation Certifications | <ul style="list-style-type: none"> ● FCC Part 15/UL, CE |
| RF Specification | |
| Frequency Band | 2.400 ~ 2.484 GHz |
| Media Access Protocol | Carrier sense multiple access with collision avoidance (CSMA/CA) |
| Modulation Technology | <ul style="list-style-type: none"> - OFDM: BPSK, QPSK, 16-QAM, 64-QAM - DBPSK, DQPSK, CCK |
| Operating Channels | 11 for North America, 14 for Japan, 13 for Europe |
| Receive Sensitivity (Typical) | <ul style="list-style-type: none"> - IEEE802.11n MCS8 @ -90dBm MCS15 @ -70dBm - IEEE802.11g 6Mbps@ -92dBm 54Mbps@ -72dBm - IEEE802.11b 1Mbps@ -93dBm 11Mbps@ -89dBm |
| Available transmit power | <ul style="list-style-type: none"> - IEEE802.11n/g 18dBm@6~9 Mbps / MCS9 16dBm@12~18 Mbps / MCS11 14dBm@24~36 Mbps / MCS13 13dBm@48~54 Mbps / MCS15 - IEEE802.11b 17.5dBm@1, 11Mbps |
| Antenna *2 | Directional internal antenna TNC type; Peak Gain = 4dBi |
| ANTENNA SPECIFICATION | |
| Standard | IEEE 802.11n and 802.11 b/g |
| Frequency Range | 2.4 to 2.49 GHz |
| Peak Gain | 4 dBi |
| VSWR | 2:1 |
| Feed Impedance | 50 ohms |
| Power handling | 30 dBm |

| | |
|--------------------|--------------------------------------------------------------------------|
| Interface | Two sets of soldering pads for 50 ohm, 1.13mm diameter, micro coax cable |
| Antenna Dimensions | 100 x 50 (mm) |
| Weight | 0.3oz (9 grams) |



| SOFTWARE FEATURES | | | | | |
|-------------------|---------------------------------------------------------------|----------------------|--------------|----------------------|--------------|
| Topology | Infrastructure | | | | |
| Operation Mode | Access Point / WDS / Universal Repeater | | | | |
| LAN | DHCP Server DHCP Client | | | | |
| Wireless | Wireless Mode – 11b / 11g / 11n / Disable | | | | |
| | Transmission Rate | | | | |
| | ➤ 11 b/g: 54, 48, 36, 24, 18, 12, 11, 9, 6, 5.5, 2, 1 in Mbps | | | | |
| | ➤ 11n: | | | | |
| | MCS Index | Guard Interval 800ns | | Guard Interval 400ns | |
| | | 20MHz (Mbps) | 40MHz (Mbps) | 20MHz (Mbps) | 40MHz (Mbps) |
| | 0 | 6.5 | 13.5 | 7.2 | 15 |
| 1 | 13 | 27 | 14.4 | 30 | |
| 2 | 19.5 | 40.5 | 21.7 | 45 | |
| 3 | 26 | 54 | 28.9 | 60 | |
| 4 | 39 | 81 | 43.3 | 90 | |
| 5 | 52 | 108 | 57.8 | 120 | |

| | | | | | |
|-----------------------|-----------------------------------------------------------------------------------------------------------------------------------------------------------------------------------------------------------------------------------------------------------------------------------------------------------------------------------------------------------------------|------|-------|-------|-------|
| | 6 | 58.5 | 121.5 | 65 | 135 |
| | 7 | 65 | 135 | 72.2 | 157.5 |
| | 8 | 13 | 27 | 14.4 | 30 |
| | 9 | 26 | 54 | 28.9 | 60 |
| | 10 | 39 | 81 | 43.3 | 90 |
| | 11 | 52 | 108 | 57.8 | 120 |
| | 12 | 78 | 162 | 86.7 | 180 |
| | 13 | 104 | 216 | 115.6 | 240 |
| | 14 | 117 | 243 | 130 | 270 |
| | 15 | 130 | 270 | 144.4 | 300 |
| | Signal Strength Bandwidth Selection- 40/20 MHz for 11n | | | | |
| Security | WEP Encryption-64/128 bit WPA Personal (WPA-PSK using TKIP or AES) WPA Enterprise (WPA-EAP using TKIP) 802.1x Authenticator Hide SSID in beacons Multiple SSID with 802.1q VLAN tagging (up to 4 SSIDs) in AP mode MAC Filter(AP mode) WLAN L2 isolation(AP mode) Wireless STA (Client) connected list (Idle/Connection Time, Pkt statistics) | | | | |
| QoS | WMM | | | | |
| MANAGEMENT | | | | | |
| Configuration | Web-based configuration HTTP / Telnet | | | | |
| Firmware Upgrade | Upgrade firmware via web-browser Keep latest setting when f/w update | | | | |
| Administrator Setting | Administrator password change | | | | |
| Reset Setting | Reboot (press 1 second) Reset to Factory Default (press 10 second) | | | | |
| System monitoring | Status, Statistics and Event Log | | | | |
| SNMP | v1, v2c | | | | |
| MIB | MIB I, MIB II (RFC1213) and Private MIB | | | | |
| Traffic Measurement | Per interface | | | | |
| Bandwidth Measurement | IP range and bandwidth management | | | | |
| Backup & Restore | Settings through Web | | | | |

| ENVIRONMENT AND MECHANICAL | |
|----------------------------|------------------------------------------------------------------------------------------------------------------------------------------|
| Temperature Range | <ul style="list-style-type: none"> Operating: 0°C to 45°C (32°F to 113°F) Storage: -20°C to 70°C (-4°F to 158°F) |
| Humidity (non-condensing) | 5% ~ 95% typical |
| Dimensions | Diameter: 120mm Height: 50mm |
| Weight | 280g |

| PACKAGE CONTENT |
|-----------------------------------|
| ▶ 11N multi-function AP (EAP9550) |
| ▶ Power Adapter (12V/1A) |
| ▶ CD with User's Manual |
| ▶ QIG |
| ▶ Wall mount screw set |